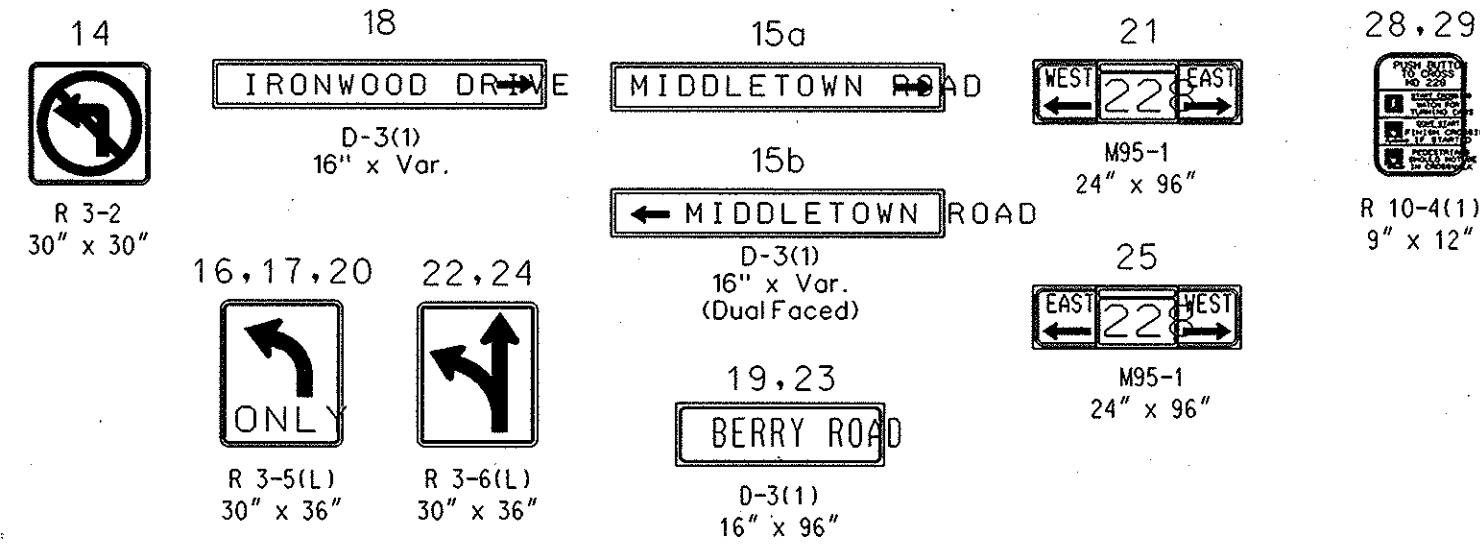


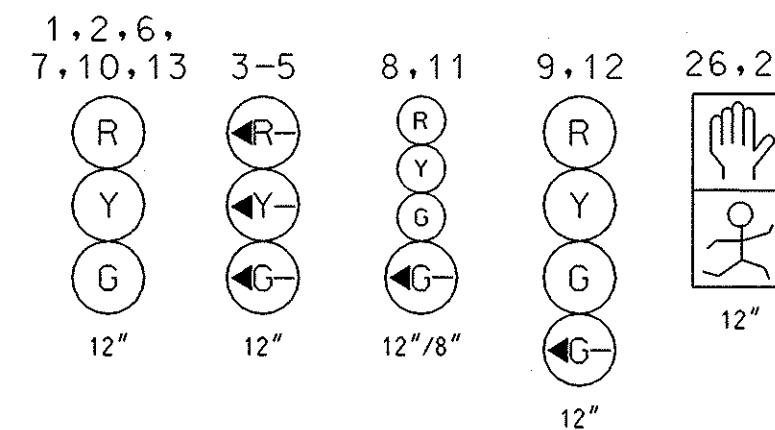
EXISTING SIGNS



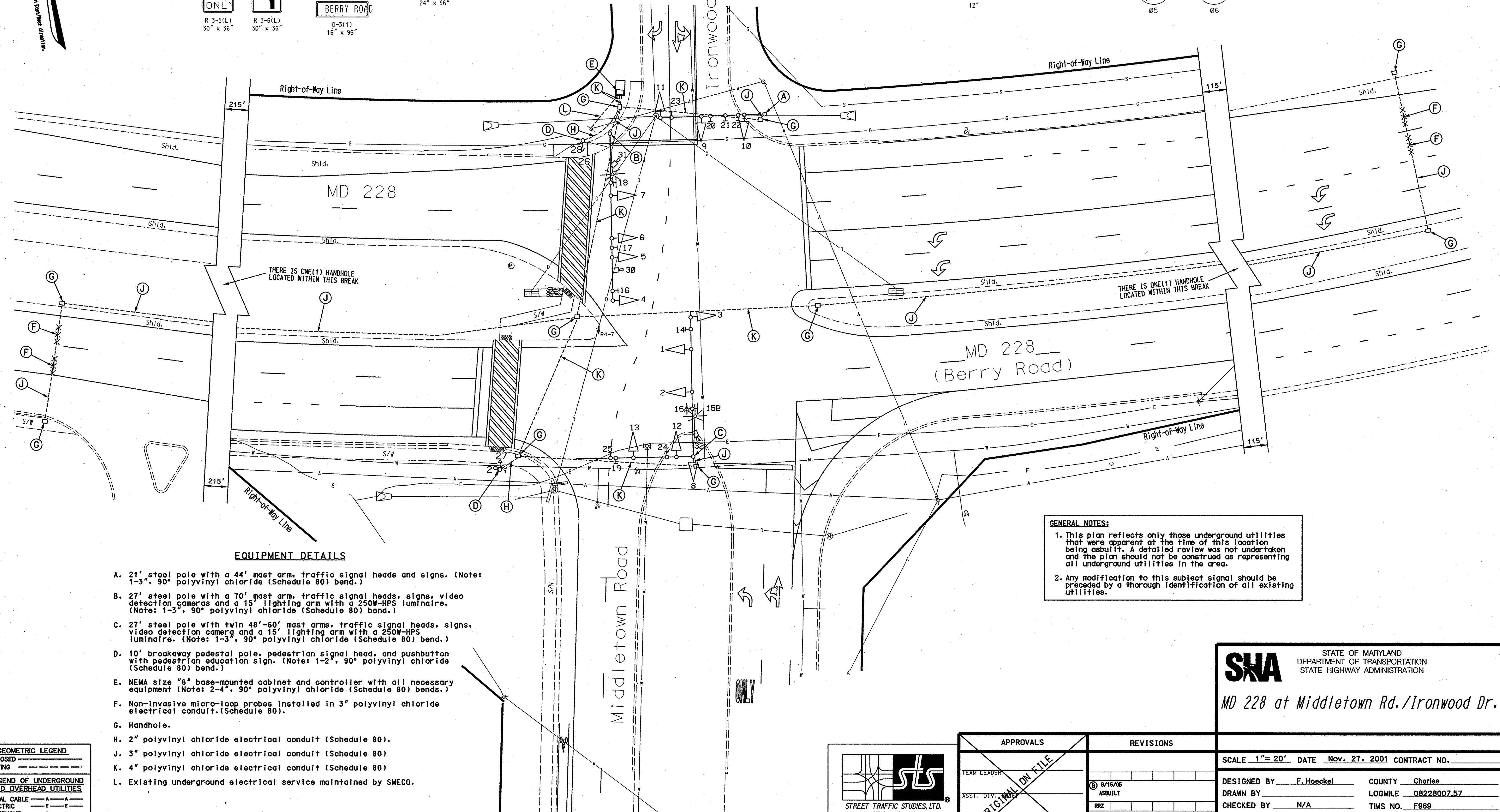
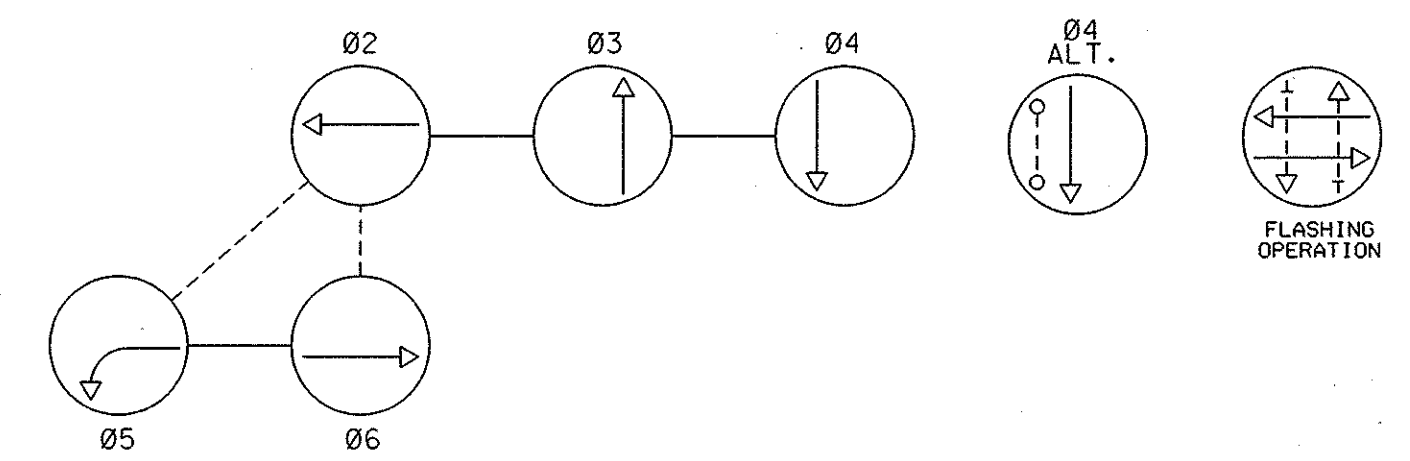
EXISTING CAMERAS

30-32

EXISTING SIGNALS



NEMA PHASING



EQUIPMENT DETAILS

- A. 21' steel pole with a 44' mast arm, traffic signal heads and signs. (Note: 1-3", 90° polyvinyl chloride (Schedule 80) bend.)
- B. 27' steel pole with a 70' mast arm, traffic signal heads, signs, video detection cameras and a 15' lighting arm with a 250W-HPS luminaire. (Note: 1-3", 90° polyvinyl chloride (Schedule 80) bend.)
- C. 27' steel pole with twin 48'-60' mast arms, traffic signal heads, signs, video detection camera and a 15' lighting arm with a 250W-HPS luminaire. (Note: 1-3", 90° polyvinyl chloride (Schedule 80) bend.)
- D. 10' breakaway pedestal pole, pedestrian signal head, and pushbutton with pedestrian education sign. (Note: 1-2", 90° polyvinyl chloride (Schedule 80) bend.)
- E. NEMA size "6" base-mounted cabinet and controller with all necessary equipment (Note: 2-4", 90° polyvinyl chloride (Schedule 80) bends.)
- F. Non-invasive micro-loop probes installed in 3" polyvinyl chloride electrical conduit. (Schedule 80).
- G. Handhole.
- H. 2" polyvinyl chloride electrical conduit (Schedule 80).
- J. 3" polyvinyl chloride electrical conduit (Schedule 80)
- K. 4" polyvinyl chloride electrical conduit (Schedule 80)
- L. Existing underground electrical service maintained by SMECO.

GENERAL NOTES:

1. This plan reflects only those underground utilities that were apparent at the time of this location being asbuilt. A detailed review was not undertaken and the plan should not be construed as representing all underground utilities in the area.
2. Any modification to this subject signal should be preceded by a thorough identification of all existing utilities.

GEOMETRIC LEGEND

PROPOSED _____

EXISTING _____

LEGEND OF UNDERGROUND AND OVERHEAD UTILITIES

AERIAL CABLE	A
ELECTRIC	E
TELEPHONE	T
GAS	G
SEWER	S
WATER	W
CABLE TV	TV



APPROVALS	REVISIONS
TEAM LEADER	
ASST. DIV. CHIEF	B 8/16/05 ASBUILT
DIVISION CHIEF	A
OFFICE DIRECTOR	S.H.A. No. 18W956M82 F.J.H.

SHA STATE OF MARYLAND
DEPARTMENT OF TRANSPORTATION
STATE HIGHWAY ADMINISTRATION

MD 228 at Middletown Rd./Ironwood Dr.

SCALE 1" = 20'	DATE Nov. 27, 2001	CONTRACT NO.
DESIGNED BY F. Hoeckel	COUNTY Charles	
DRAWN BY	LOGMILE 08228007.57	
CHECKED BY N/A	TIMS NO. F969	
F.A.P. NO.	TOD NO.	
TS NO. 3786-B	DRAWING NO. OF	SHEET NO. 1 OF 1

PLOTTED: 4/24/05
FILE: 4/24/05