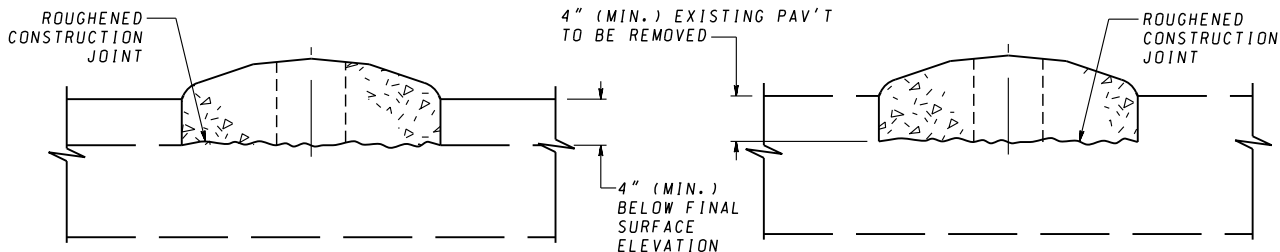


**SECTION A-A**  
**TYPE C-1**  
PLACED WITH APPROVED  
ASPHALT MIX PAVEMENT

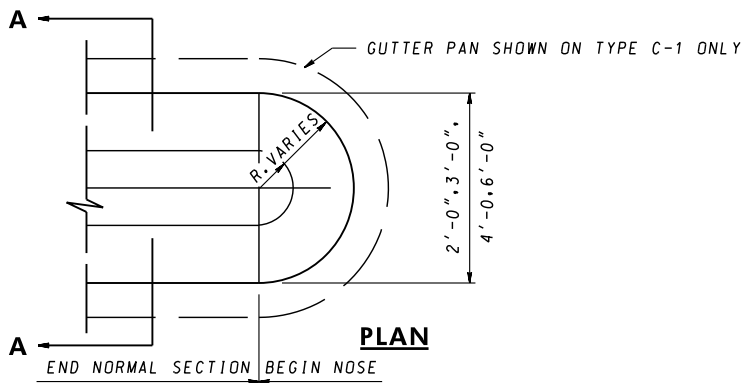
DEPTH OF GUTTER PAN TO  
MATCH LAMINATION OF  
PROPOSED PAVING SECTION  
AS CLOSELY AS POSSIBLE

**SECTION A-A**  
**TYPE C-2**  
PLACED WITH CEMENT  
CONCRETE PAVEMENT



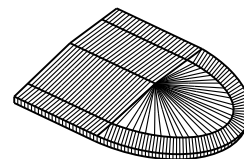
**SECTION A-A**  
**TYPE C-3**  
PLACED IN COMBINATION  
WITH PAVEMENT RESURFACING

**SECTION A-A**  
**TYPE C-4**  
PLACED ON EXISTING PAVEMENT

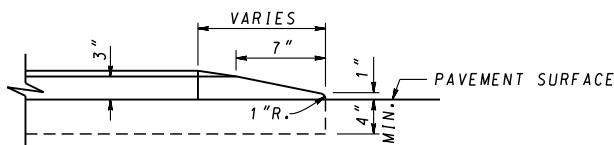


**PLAN**

END NORMAL SECTION BEGIN NOSE



**ISOMETRIC-NOSE DOWN**  
(SHOWN WITHOUT GUTTER PAN)



**ELEVATION**

**NOSE DOWN AT APPROACH END OF MEDIAN**

**NOTES**

1. UNLESS OTHERWISE SPECIFIED, LONGITUDINAL TIE BAR DEVICE, TYPE 'A' OR TYPE 'B', PLACED AT MIDDLE OF KEYWAY & SPACED ACCORDING TO SPECIFICATIONS FOR CONCRETE PAVEMENT SHALL BE USED AT CONSTRUCTION JOINT BETWEEN MONOLITHIC CONCRETE MEDIAN (OR GUTTER PAN) AND CONCRETE PAVEMENT. SEE STANDARD MD 572.61. SOLID BAR AND SLEEVE MAY BE REPLACED BY TUBE WITH INTERNAL THREAD.
2. JOINT SPACING WILL BE A MAXIMUM OF 10'-0" APART, SEE SPECIFICATIONS FOR LOCATION AND DESCRIPTION OF TREATMENT FOR THE TYPES OF JOINTS USED. CONCRETE PAVEMENT, JOINTS SHALL MATCH PAVEMENT JOINTS.
3. ALLOW 4" Ø HOLES IN MEDIAN FOR SIGNS, SPACED AS SHOWN ON PLANS OR AS DIRECTED BY THE ENGINEER.

SPECIFICATION	CATEGORY CODE ITEMS
APPROVED	<i>[Signature]</i> DIRECTOR - OFFICE OF HIGHWAY DEVELOPMENT
	APPROVAL • SHA REVISIONS
	APPROVAL • FEDERAL HIGHWAY ADMINISTRATION
	APPROVAL 3-15-83
	APPROVAL 4-1-83
REVISED 2-25-16	REVISED 2-23-16
REVISED	REVISED
REVISED	REVISED

**Maryland Department of Transportation**  
**STATE HIGHWAY ADMINISTRATION**  
STANDARDS FOR HIGHWAYS AND INCIDENTAL STRUCTURES  
**STANDARD MONOLITHIC CONCRETE MEDIAN**  
**TYPE 'C'**

**STANDARD NO.**

**MD 645.03**