

# TEMPORARY TRAFFIC CONTROL TYPICAL APPLICATION

## NOTES

- REFER TO GENERAL NOTES 19.1 AND 19.2 FOR THE USE OF TPRS.
- REFER TO "RECOMMENDED TPRS SPACING IN ARRAY" TABLE FOR SPACING BETWEEN RUMBLE STRIPS IN AN ARRAY. GEOMETRY OF ROADWAY MAY DICTATE THE LOCATION OF RUMBLE STRIPS. CHANGES SHALL BE APPROVED BY THE ENGINEER.

### RECOMMENDED TPRS SPACING IN ARRAY

SPEED LIMIT (MPH)	TPRS SPACING (CENTER-TO-CENTER, FT)
<40	10
41-55	15
≥56	20

- REFER TO "TPRS ARRAYS TO INSTALL" TABLE TO DETERMINE THE NUMBER OF ARRAYS TO INSTALL BASED ON THE NUMBER OF CLOSED LANES.

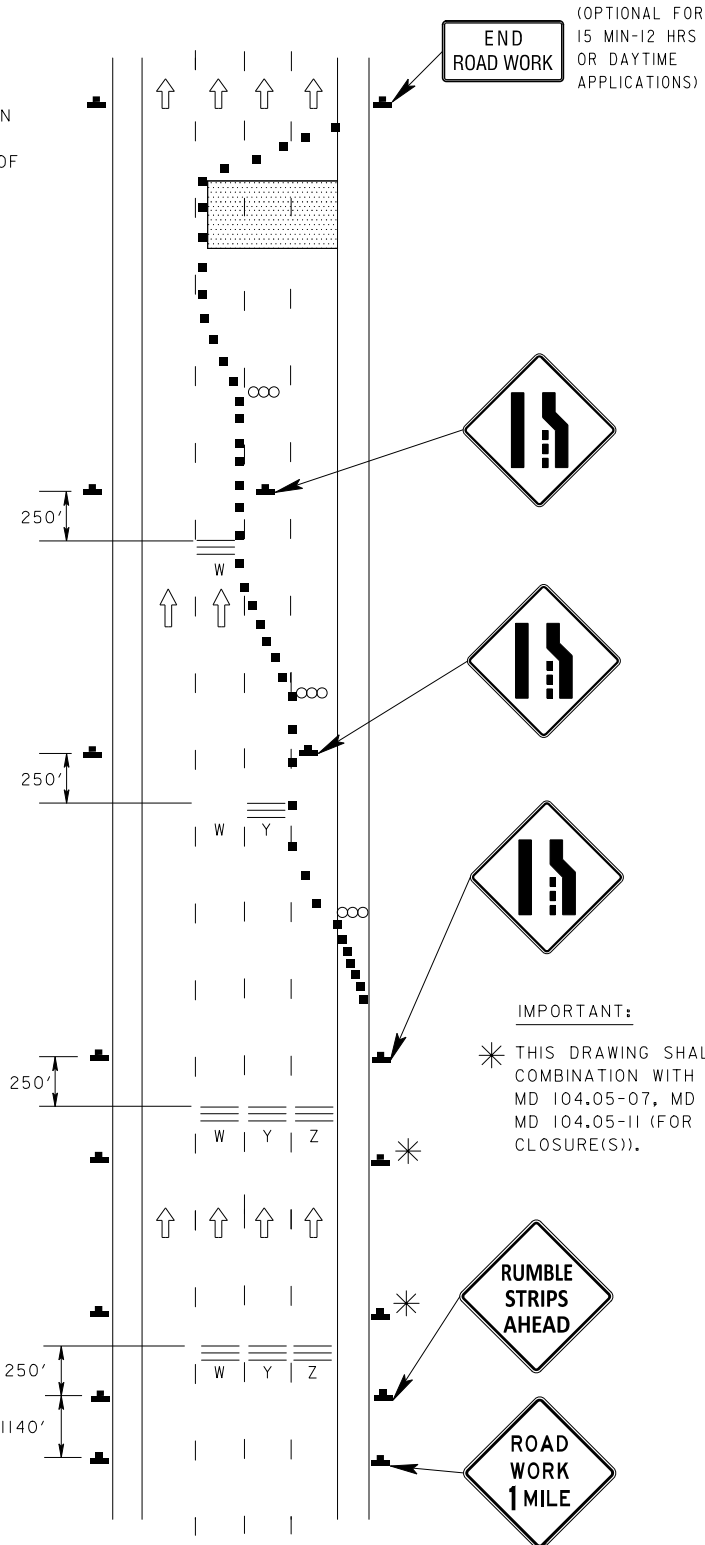
### TPRS ARRAYS TO INSTALL

NUMBER OF CLOSED LANES	TPRS ARRAYS		
	W	Y	Z
ONE	NO	NO	YES
TWO	NO	YES	YES
THREE	YES	YES	YES

- SIMILAR PLACEMENT FOR TPRS AND "RUMBLE STRIPS AHEAD" SIGNS SHALL BE USED WITH STANDARD DETAILS MD 104.05-08, MD 104.05-10, MD 104.05-12 (FOR LEFT LANE CLOSURE(S)), MD 104.05-14, 104.05-15, 104.05-16, 104.05-17, 104.05-19.

## KEY:

- CHANNELIZING DEVICES
- SIGN SUPPORT  
FACE OF SIGN
- DIRECTION OF TRAFFIC
- WORK SITE
- ARROW PANEL
- TEMPORARY PORTABLE RUMBLE STRIPS ARRAY (TPRS ARRAY)
- ADVANCE WARNING SIGNS REPRESENTED



<b>SPECIFICATION</b> 104	<b>CATEGORY CODE ITEMS</b>
<b>APPROVED</b>  DIRECTOR - OFFICE OF TRAFFIC AND SAFETY	
<b>APPROVAL SHA REVISIONS</b>	<b>APPROVAL FEDERAL HIGHWAY ADMINISTRATION</b>
<b>APPROVAL</b> 2-19-24	<b>APPROVAL</b> 12-06-23
REVISED	REVISED
REVISED	REVISED
REVISED	REVISED

**MDOT** MARYLAND DEPARTMENT OF TRANSPORTATION  
STATE HIGHWAY ADMINISTRATION

**STANDARDS FOR HIGHWAYS AND INCIDENTAL STRUCTURES  
LANE CLOSURE(S) ON  
DIVIDED CONTROLLED (FREEWAY/EXPRESSWAY)  
W/TEMPORARY PORTABLE RUMBLE STRIPS**

**STANDARD NO. MD 104.06-31**