

TEMPORARY TRAFFIC CONTROL TYPICAL APPLICATION

NOTES

- REFER TO GENERAL NOTES 19.1 AND 19.2 FOR THE USE OF TPRS.
- REFER TO "RECOMMENDED TPRS SPACING IN ARRAY" TABLE FOR SPACING BETWEEN RUMBLE STRIPS IN ARRAY.

RECOMMENDED TPRS SPACING IN ARRAY

SPEED LIMIT (MPH)	TPRS SPACING (CENTER-TO-CENTER, FT)
≤40	10
41-55	15
>56	20

- REFER TO "SPACING BETWEEN TPRS AND SIGNS" TABLE TO DETERMINE THE CORRESPONDING SPACING. GEOMETRY OF THE ROADWAY MAY DICTATE THE LOCATION OF THE RUMBLE STRIPS. CHANGES SHALL BE APPROVED BY THE ENGINEER.

SPACING BETWEEN TPRS AND SIGNS

DURATION	SPEED LIMIT (MPH)	DISTANCE (FT)		
		A	B	C
15 MIN- 12 HRS OR DAYTIME	≤40	150	500	700
	>40	200	700	1300
OVER 12 HRS OR NIGHTTIME	≤40	150	500	900
	>40	200	700	1400









- REFER TO "TPRS ARRAYS TO INSTALL" TABLE TO DETERMINE THE NUMBER OF ARRAYS TO INSTALL BASED ON THE NUMBER OF CLOSED LANES.

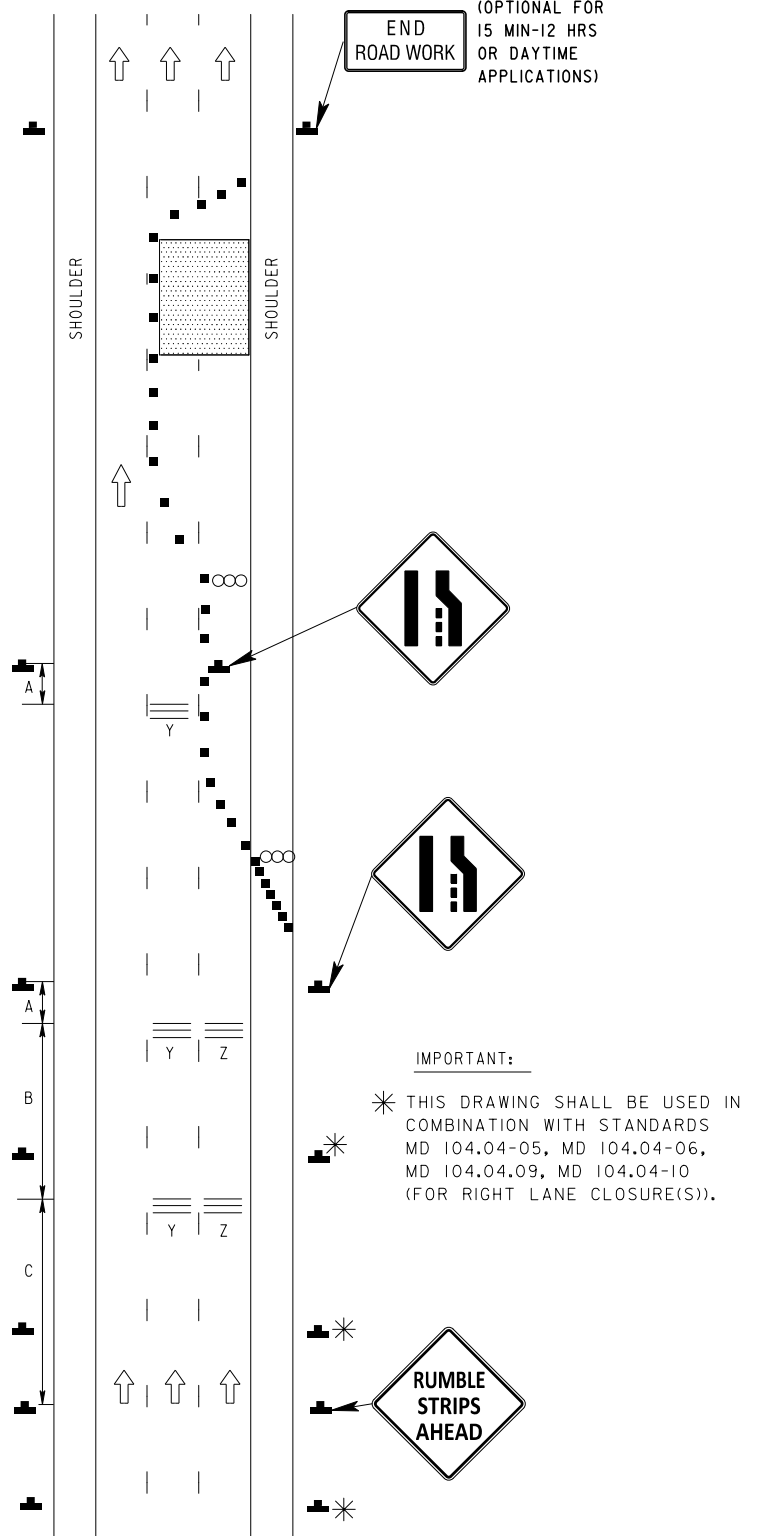
TPRS ARRAYS TO INSTALL

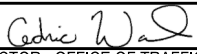
NUMBER OF CLOSED LANES	TPRS ARRAYS	
	Y	Z
ONE	NO	YES
TWO	YES	YES

- SIMILAR PLACEMENT FOR TPRS AND "RUMBLE STRIPS AHEAD" SIGNS SHALL BE USED WITH STANDARD DETAILS MD 104.04-03, MD 104.04-04, MD 104.04.07, MD 104.04.08, MD 104.04.09, AND MD 104.04-10 (FOR LEFT LANE CLOSURE(S)).

KEY:

-  CHANNELIZING DEVICES
-  SIGN SUPPORT
-  FACE OF SIGN
-  DIRECTION OF TRAFFIC
-  WORK SITE
-  ARROW PANEL
-  TEMPORARY PORTABLE RUMBLE STRIPS ARRAY (TPRS ARRAY)
-  ADVANCE WARNING SIGNS REPRESENTED



SPECIFICATION 104	CATEGORY CODE ITEMS
APPROVED  DIRECTOR - OFFICE OF TRAFFIC AND SAFETY	
APPROVAL SHA REVISIONS	APPROVAL FEDERAL HIGHWAY ADMINISTRATION
APPROVAL 2-19-24	APPROVAL 12-06-23
REVISED	REVISED
REVISED	REVISED
REVISED	REVISED

MOT MARYLAND DEPARTMENT OF TRANSPORTATION
STATE HIGHWAY ADMINISTRATION

**STANDARDS FOR HIGHWAYS AND INCIDENTAL STRUCTURES
LANE CLOSURE(S) ON
MULTILANE DIVIDED UNCONTROLLED
W/ TEMPORARY PORTABLE RUMBLE STRIPS**

STANDARD NO. MD 104.06-30