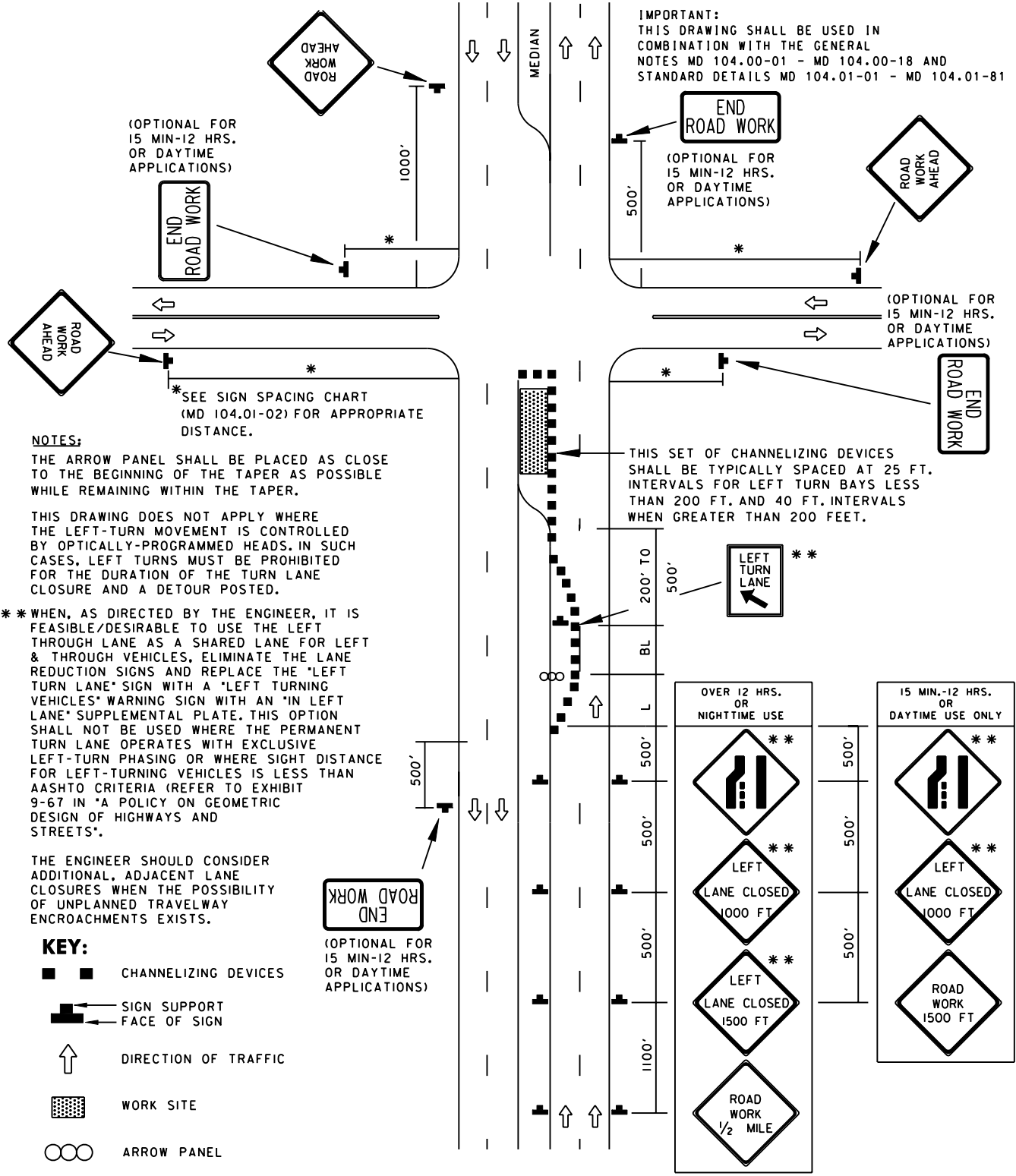


TEMPORARY TRAFFIC CONTROL TYPICAL APPLICATION



SPECIFICATION 104	CATEGORY CODE ITEMS	
APPROVED DIRECTOR - OFFICE OF TRAFFIC AND SAFETY		
	APPROVAL • SHA REVISIONS	APPROVAL • FEDERAL HIGHWAY ADMINISTRATION
	APPROVAL 8-20-03	APPROVAL 9-23-03
	REVISED 8-11-10	REVISED 10-5-10
	REVISED	REVISED
	REVISED	REVISED

Maryland Department of Transportation
STATE HIGHWAY ADMINISTRATION
 STANDARDS FOR HIGHWAYS AND INCIDENTAL STRUCTURES

LEFT-TURN BAY CLOSURE /DIVIDED UNCON.
EQ/LESS THAN 40 MPH

STANDARD NO. MD 104.04-14