

TEMPORARY TRAFFIC CONTROL TYPICAL APPLICATION

IMPORTANT:
THIS DRAWING SHALL BE USED IN COMBINATION WITH THE GENERAL NOTES MD 104.00-01 - MD 104.00-18 AND STANDARD DETAILS MD 104.01-01 - MD 104.01-81

NOTE:






THIS TYPICAL APPLICATION SHOULD GENERALLY BE USED ONLY WHEN WORKERS ARE NOT PRESENT IN THE CENTER LANE. WHEN WORKERS ARE PRESENT IN THE CENTER LANE, EITHER TEMPORARY TRAFFIC BARRIER OR A TWO-LANE CLOSURE SHOULD BE USED TO CLOSE THE CENTER LANE. (SEE STANDARD NO. MD 104.04-10).

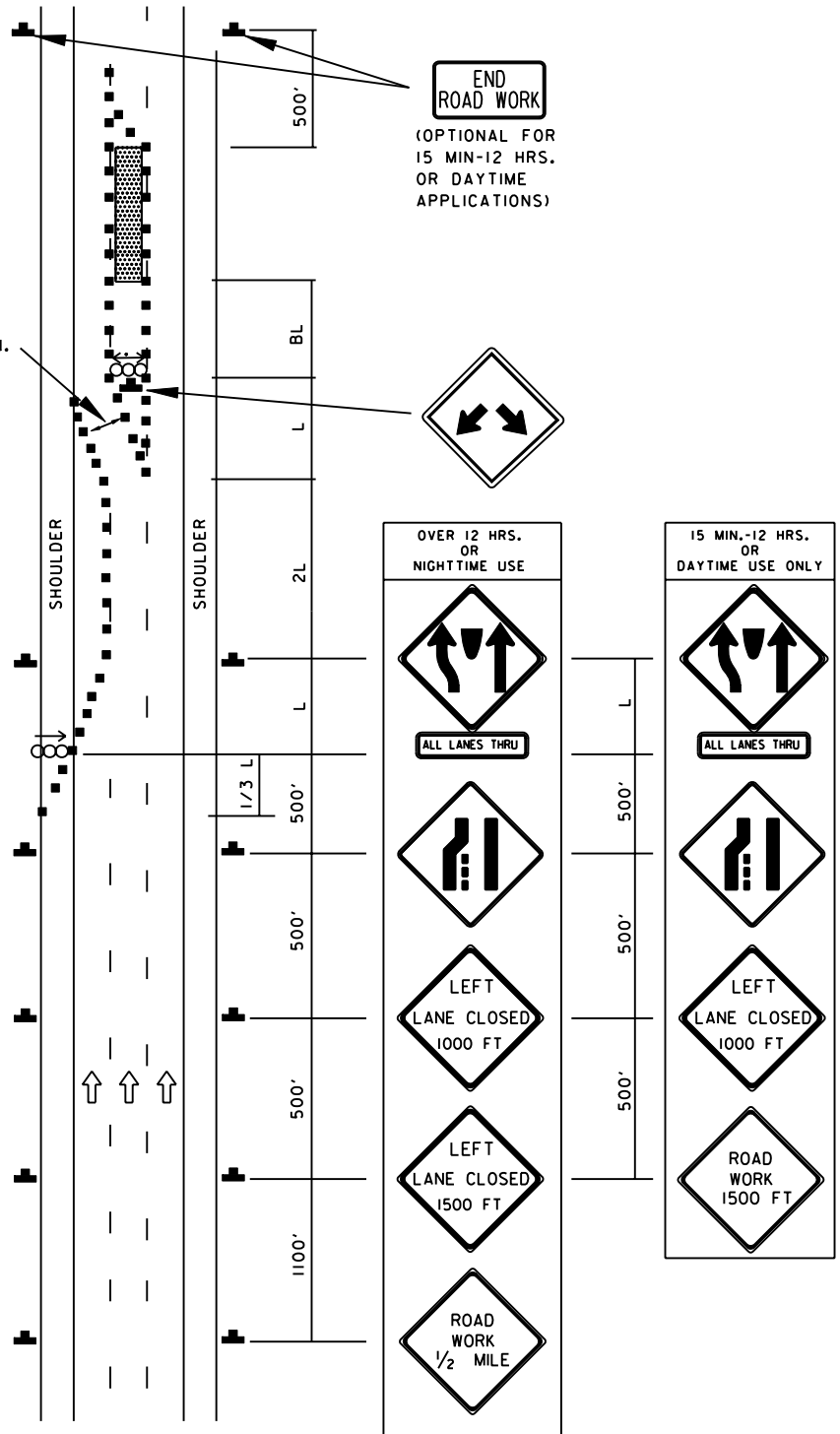
THERE SHALL BE A MINIMUM OF SEVEN CHANNELIZING DEVICES IN THE SHOULDER TAPER.

SUPPLEMENTARY SIGNS MAY BE MOUNTED ON PORTABLE SIGN STANDS USING ADDITIONAL BRACKETS OBTAINED FROM THE STAND MANUFACTURER. SUPPLEMENTARY SIGNS SHALL NOT COVER ANY PART OF THE FACE OF THE PRIMARY SIGN.

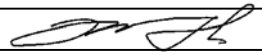
THE ENGINEER SHOULD CONSIDER ADDITIONAL, ADJACENT LANE CLOSURES WHEN THE POSSIBILITY OF UNPLANNED TRAVELWAY ENCROACHMENTS EXISTS.

KEY:

-  CHANNELIZING DEVICES
-  SIGN SUPPORT
FACE OF SIGN
-  DIRECTION OF TRAFFIC
-  WORK SITE
-  ARROW PANEL (WITH DIRECTIONAL ARROW)



SPECIFICATION 104	CATEGORY CODE ITEMS
-----------------------------	---------------------

APPROVED 
DIRECTOR - OFFICE OF TRAFFIC AND SAFETY



APPROVAL • SHA REVISIONS	APPROVAL • FEDERAL HIGHWAY ADMINISTRATION
APPROVAL 8-20-03	APPROVAL 9-23-03
REVISED 8-11-10	REVISED 7-29-10
REVISED	REVISED
REVISED	REVISED

Maryland Department of Transportation
STATE HIGHWAY ADMINISTRATION
STANDARDS FOR HIGHWAYS AND INCIDENTAL STRUCTURES
CENTER LANE CLOSURE /DIVIDED UNCON.
EQL /LESS THAN 40 MPH
STANDARD NO. MD 104.04-08