

## TEMPORARY TRAFFIC CONTROL TYPICAL APPLICATION

**IMPORTANT:**  
THIS DRAWING SHALL BE USED IN COMBINATION WITH THE GENERAL NOTES MD 104.00-01 - MD 104.00-18 AND STANDARD DETAILS MD 104.01-01 - MD 104.01-81

**NOTES:**


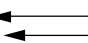

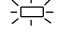

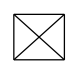
IF THE LEAD WORK VEHICLE IS TRAVELING AT THE POSTED SPEED LIMIT OR WITHIN 15 MPH OF IT, THEN NO BACK UP VEHICLE IS NECESSARY.

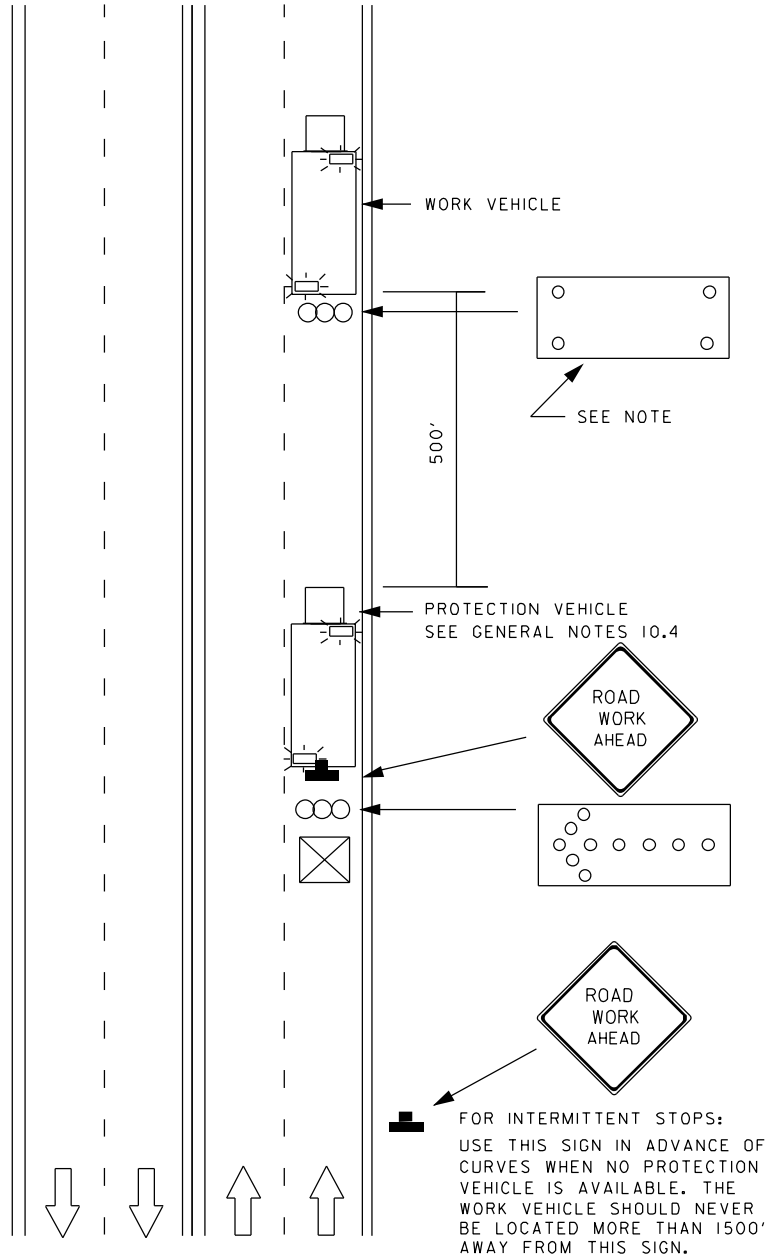
IN URBAN AREAS THE DISTANCE MAINTAINED BETWEEN VEHICLES MAY BE DECREASED AS NEEDED.

IF ONLY ONE ARROW PANEL IS AVAILABLE IT SHALL OPERATE IN ARROW MODE. EXCEPT A WORK VEHICLE ON THE SHOULDER NEED ONLY DISPLAY THE ARROW PANEL IN THE 'CAUTION' MODE.

WHEN USED, THE PROTECTION VEHICLE MAY BE USED AS A SUBSTITUTE FOR THE WORK VEHICLE WHERE DIRECTED BY THE ENGINEER.

**KEY:**

-  SIGN SUPPORT
-  FACE OF SIGN
-  ARROW PANEL
-  APPROVED VEHICLE SAFETY LIGHT
-  DIRECTION OF TRAFFIC
-  TRUCK OR TRAILER-MOUNTED ATTENUATOR (TMA/TTMA)



SPECIFICATION <b>104</b>	CATEGORY CODE ITEMS
APPROVED	<i>Gedric W. [Signature]</i> DIRECTOR - OFFICE OF TRAFFIC AND SAFETY
<b>SHA</b> State Highway Administration	APPROVAL • SHA REVISIONS
	APPROVAL • FEDERAL HIGHWAY ADMINISTRATION
	APPROVAL <b>8-20-03</b> REVISSED <b>8-11-10</b>
	APPROVAL <b>9-23-03</b> REVISSED <b>7-29-10</b>
REVISSED <b>8-20-14</b>	REVISSED <b>8-11-14</b>
REVISSED	REVISSED

**Maryland Department of Transportation**  
**STATE HIGHWAY ADMINISTRATION**  
STANDARDS FOR HIGHWAYS AND INCIDENTAL STRUCTURES  
**MOBILE OPERATION/MULTILANE UNDIV.**  
**ALL SPEEDS/0-15 MIN., AND MOVING SLOW**

**STANDARD NO.**

**MD 104.03-15**