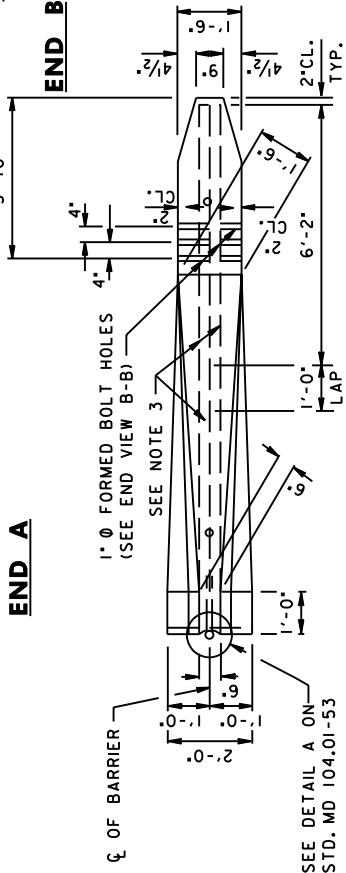
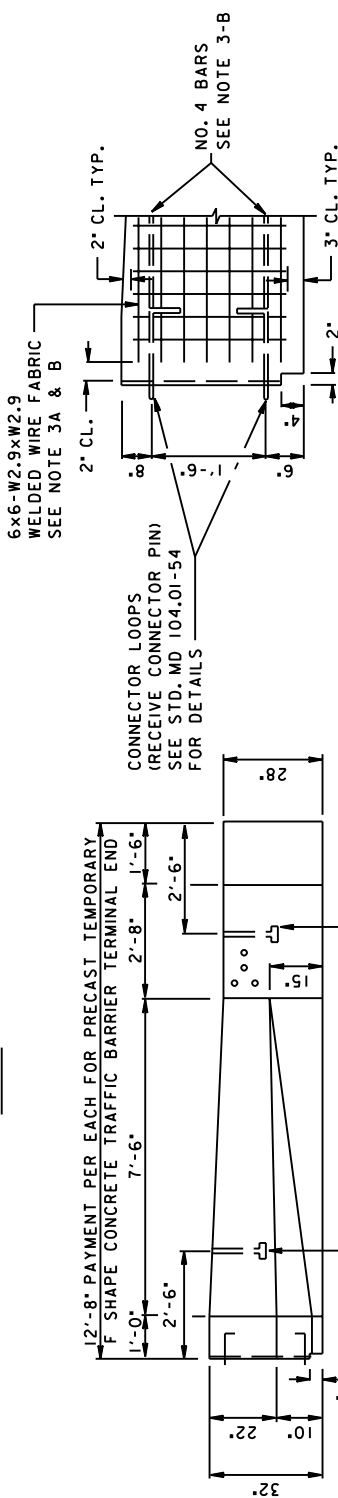


NOTES

1. THIS BARRIER IS TO BE USED IN COMBINATION WITH TRAFFIC BARRIER W BEAM AS SHOWN ON STANDARD MD 605.45 OR TRAFFIC BARRIER W BEAM MEDIAN BARRIER AS SHOWN ON STANDARD MD 104.01-62 AND PRECAST TEMPORARY CONCRETE TRAFFIC BARRIER SHOWN ON STD. MD 104.01-53 AND MD 104.01-54.
2. THE PRECAST TEMPORARY CONCRETE TRAFFIC BARRIER TERMINAL END SHALL BE CAST USING CONCRETE MIX NO.6 (4500 PSI).
3. REINFORCEMENT: A) 6x6 W2.9xW2.9 WELDED WIRE FABRIC FOLDED IN U SHAPE. B) 2-NO.4 1/2" Ø REINFORCEMENT BARS-GRADE 60-EACH 11'- 4" LONG.
4. ONE CONNECTOR PIN SHALL BE FURNISHED WITH EACH BARRIER. SEE STD. MD 104.01-54 FOR DETAILS OF CONNECTOR PIN.
5. THE COST OF THE CONNECTOR PIN SHALL BE INCIDENTAL TO THE CONTRACT PRICE PER EACH FOR PRECAST TEMPORARY 32 INCH F SHAPE CONCRETE TRAFFIC BARRIER TERMINAL END.

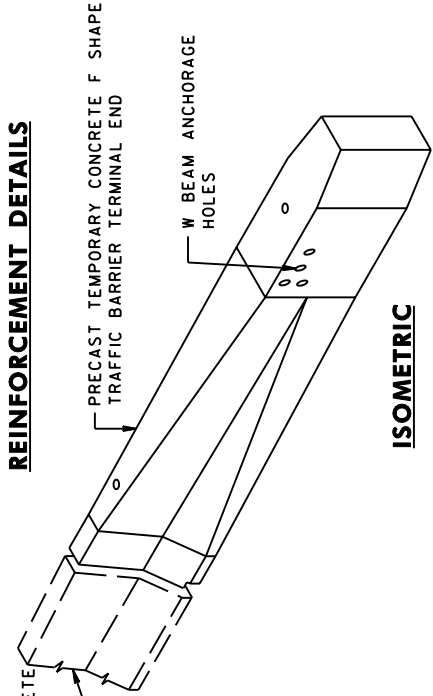


PLAN

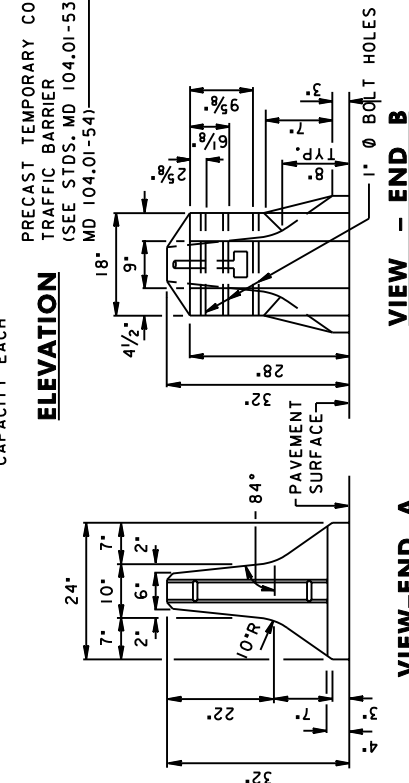


ELEVATION

REINFORCEMENT DETAILS



ISOMETRIC



VIEW-END A

VIEW - END B

(TYPICAL FOR THE 1'-0" LENGTH AT END A OF THE BARRIER)

SPECIFICATION 104	CATEGORY CODE ITEMS	
APPROVED	<i>Kirk G. McCall</i> DIRECTOR - OFFICE OF HIGHWAY DEVELOPMENT	
	APPROVAL • SHA REVISIONS	APPROVAL • FEDERAL HIGHWAY ADMINISTRATION
	APPROVAL 8-20-03	APPROVAL 9-23-03
	REVISED 9-30-04	REVISED 3-31-04
	REVISED	REVISED

Maryland Department of Transportation
STATE HIGHWAY ADMINISTRATION
 STANDARDS FOR HIGHWAYS AND INCIDENTAL STRUCTURES
PRECAST TEMPORARY 32 INCH F SHAPE
CONCRETE TRAFFIC BARRIER TERMINAL END

STANDARD NO. MD 104.01-46